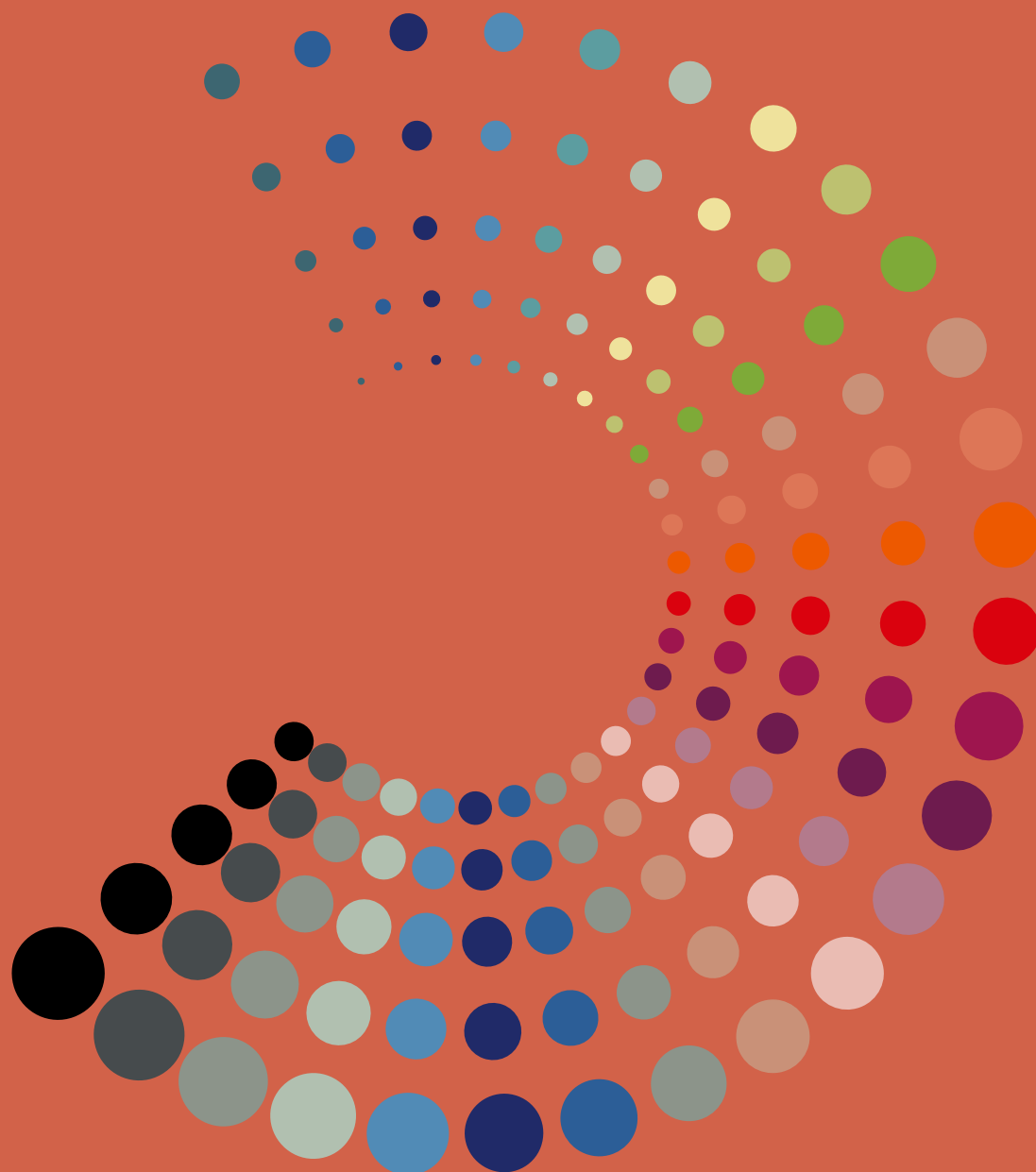
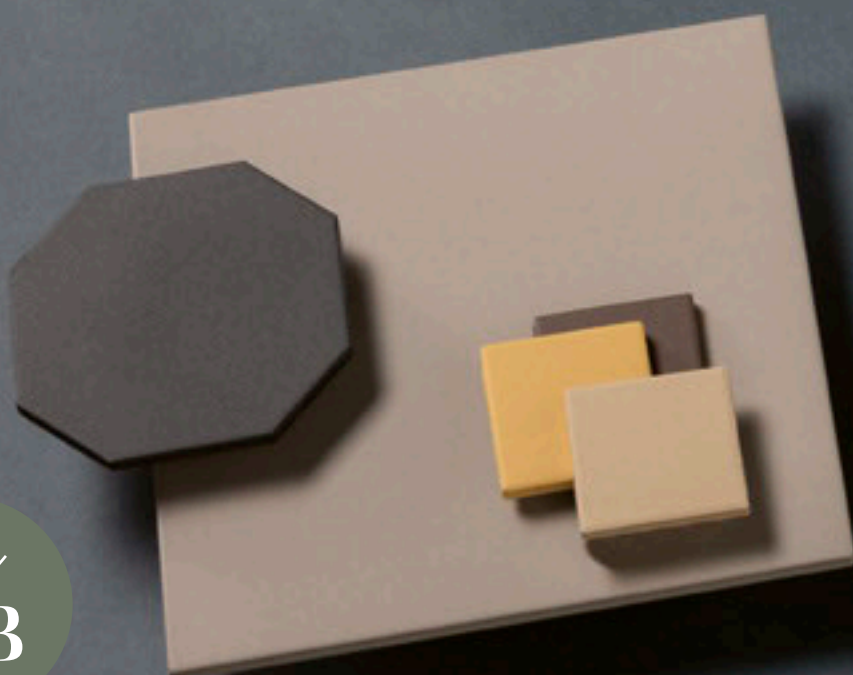
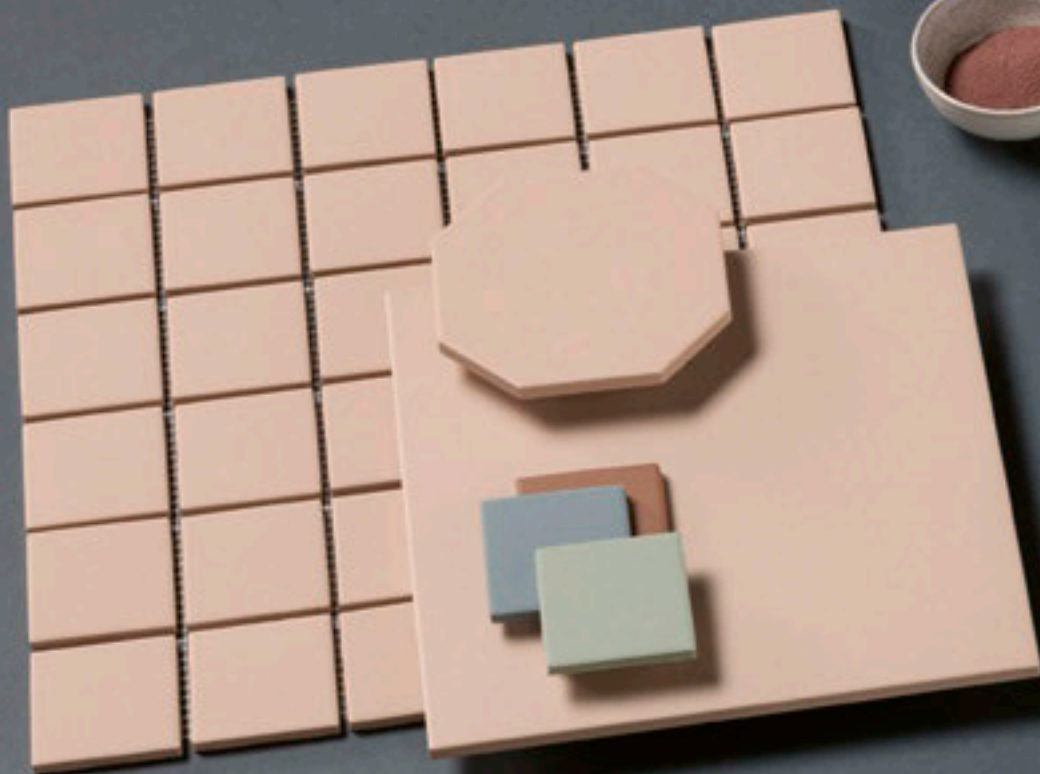


**CE.SI.**



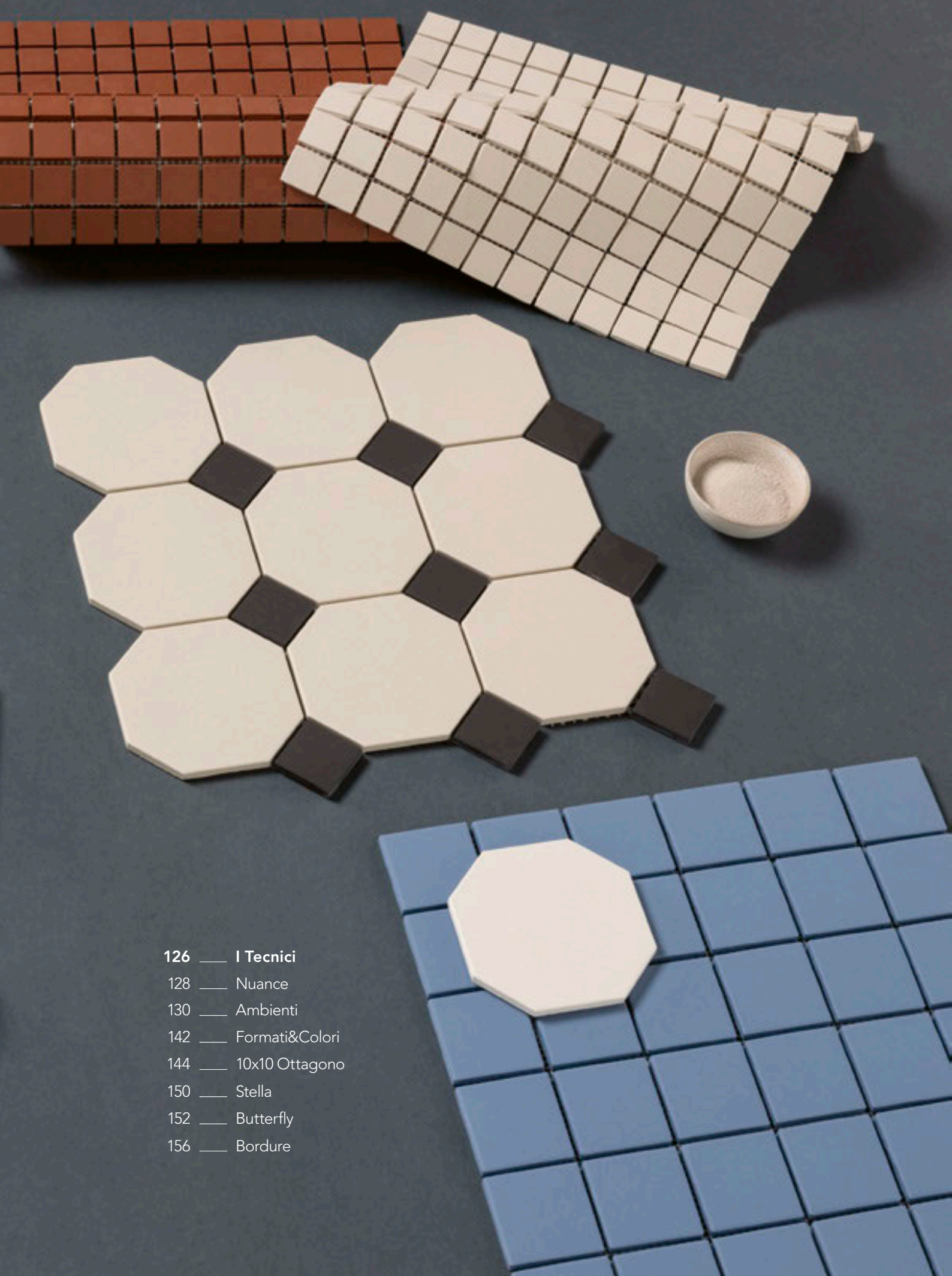
**CATALOGO  
GENERALE**

**FULL BODY COLLECTION**



# FULL BODY R10 A+B

GRES PORCELLANATO  
TUTTA MASSA



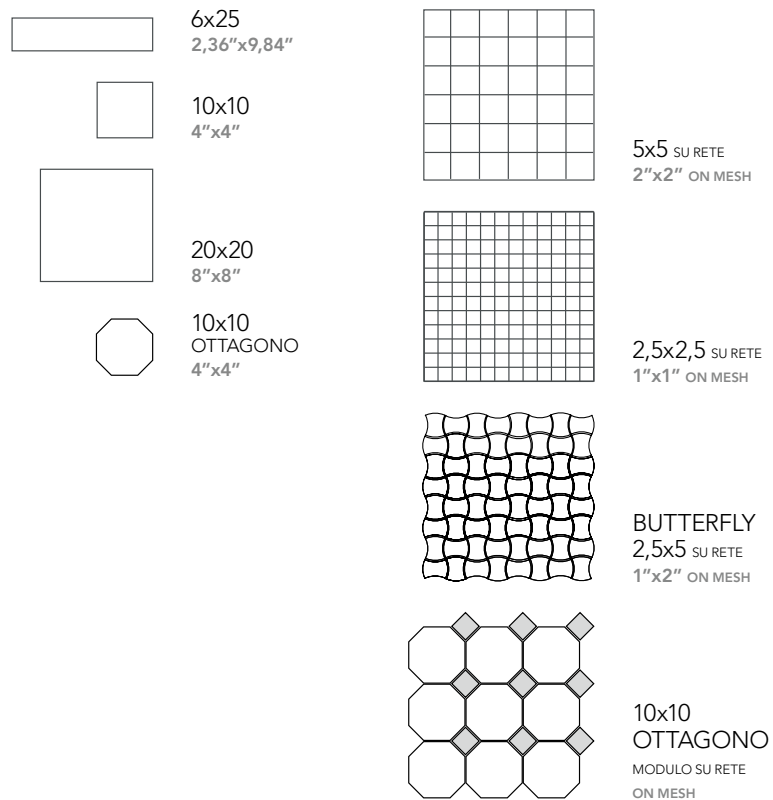
- 126 — I Tecnici
- 128 — Nuance
- 130 — Ambienti
- 142 — Formati&Colori
- 144 — 10x10 Ottagono
- 150 — Stella
- 152 — Butterfly
- 156 — Bordure

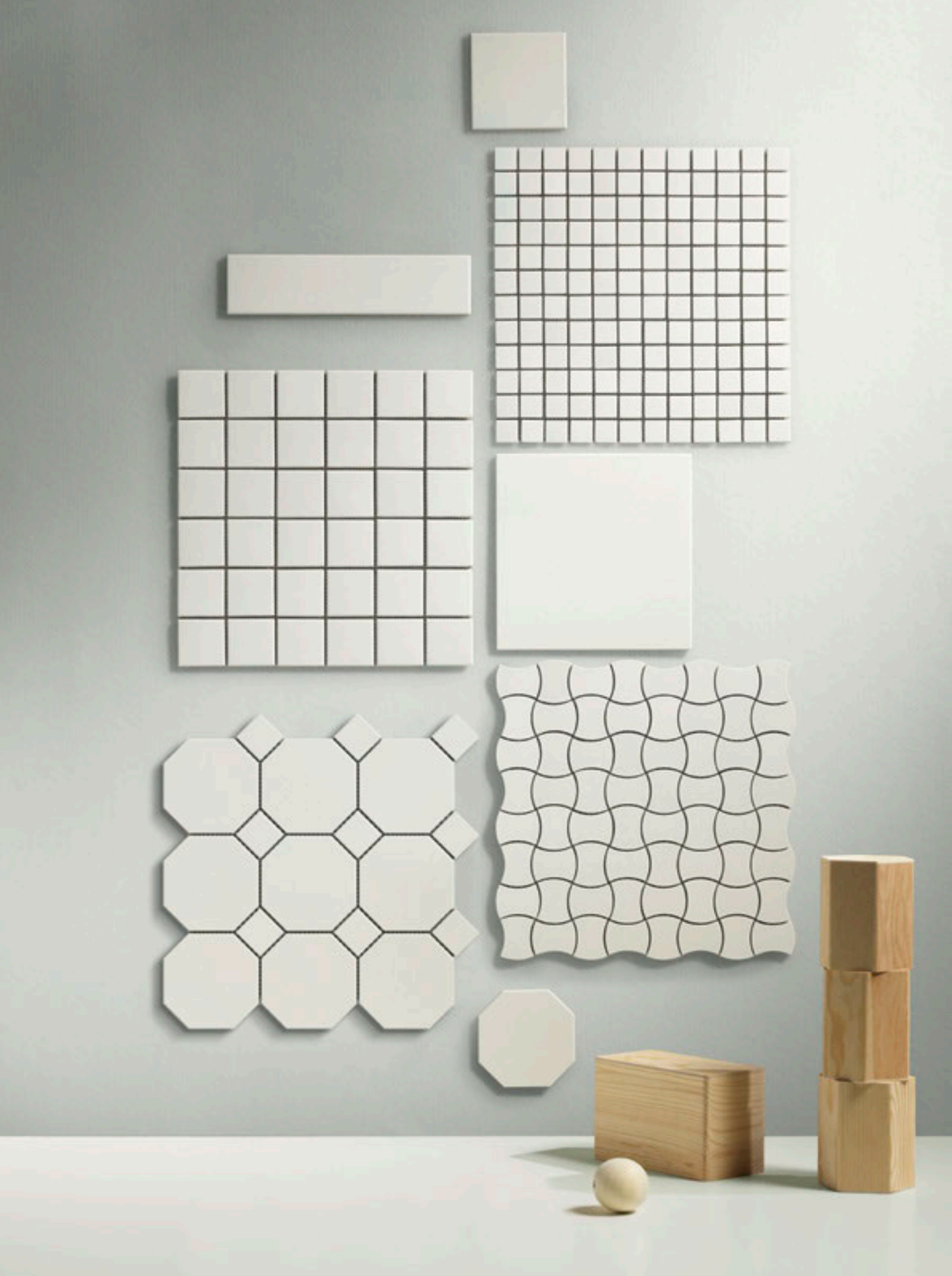


# I Tecnici

R10 A+B

## FULL BODY COLLECTION





# Nuance

---



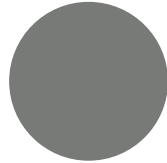
ALLUMINIO



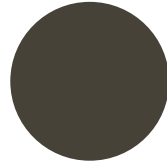
FLUORO



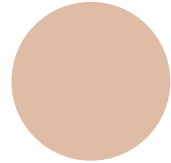
SODIO



NICKEL



CARBONIO



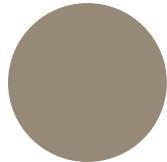
AGATA



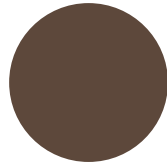
GIADA



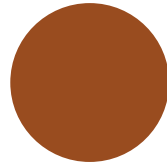
SABBIA



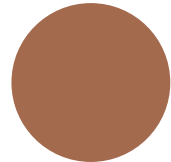
XENO



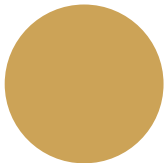
TERRA



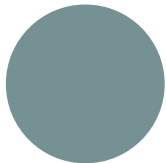
GRES



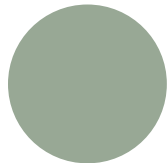
RUGGINE



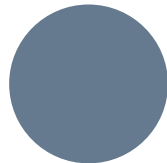
OTTONE



ACQUA



OSSIDO



ZAFFIRO



5x5 SU RETE 2"x2" ON MESH



ACQUA

NICKEL



# *Prestazione* hi-tech



10x10 4"x4"



NICKEL



GRES



ZAFFIRO



FLUORO

PROGETTO BY:

Studio Gad - Roma

Photo: Sara Giovannetti, Carmen Bodega Mexicana - Roma



Gres porcellanato non smaltato classificato gruppo B1a - assorbimento acqua inferiore a 0,5% - adatto per posa all'interno ed esterno.

Realizzato nei formati 2,5x2,5 / 5x5 / 10x10 e 20x20, viene proposto in 16 colori assortiti e nel formato 6x25 in 5 colori di tendenza. Ideale per la pavimentazione di ambienti sia pubblici che privati, combina alla facilità di pulizia una superficie antiscivolo - R10 A+B.

Unglazed porcelain stoneware belonging to B1a group - water absorption less 0,5 % - suitable for in-and outdoor.

Produced in 2,5x2,5 / 5x5 / 10x10 and 20x20 in 16 colours and in 6x25 in 5 colours, it is suitable for public and private flooring as it guarantees an antislip surface R10 A+ B.



5x5 SU RETE 2"x2" ON MESH



2,5x2,5 SU RETE 1"x1" ON MESH







5x5 SU RETE 2"x2" ON MESH . FULL BODY



AGATA

5x5 SU RETE 2"x2" ON MESH . FULL BODY



AGATA

ACQUA



5x5 SU RETE 2"x2" ON MESH . FULL BODY



OTTONE

10x10 4"x4" . FULL BODY



XENO



# *Prestazione* hi-tech



20x20 8"x8"

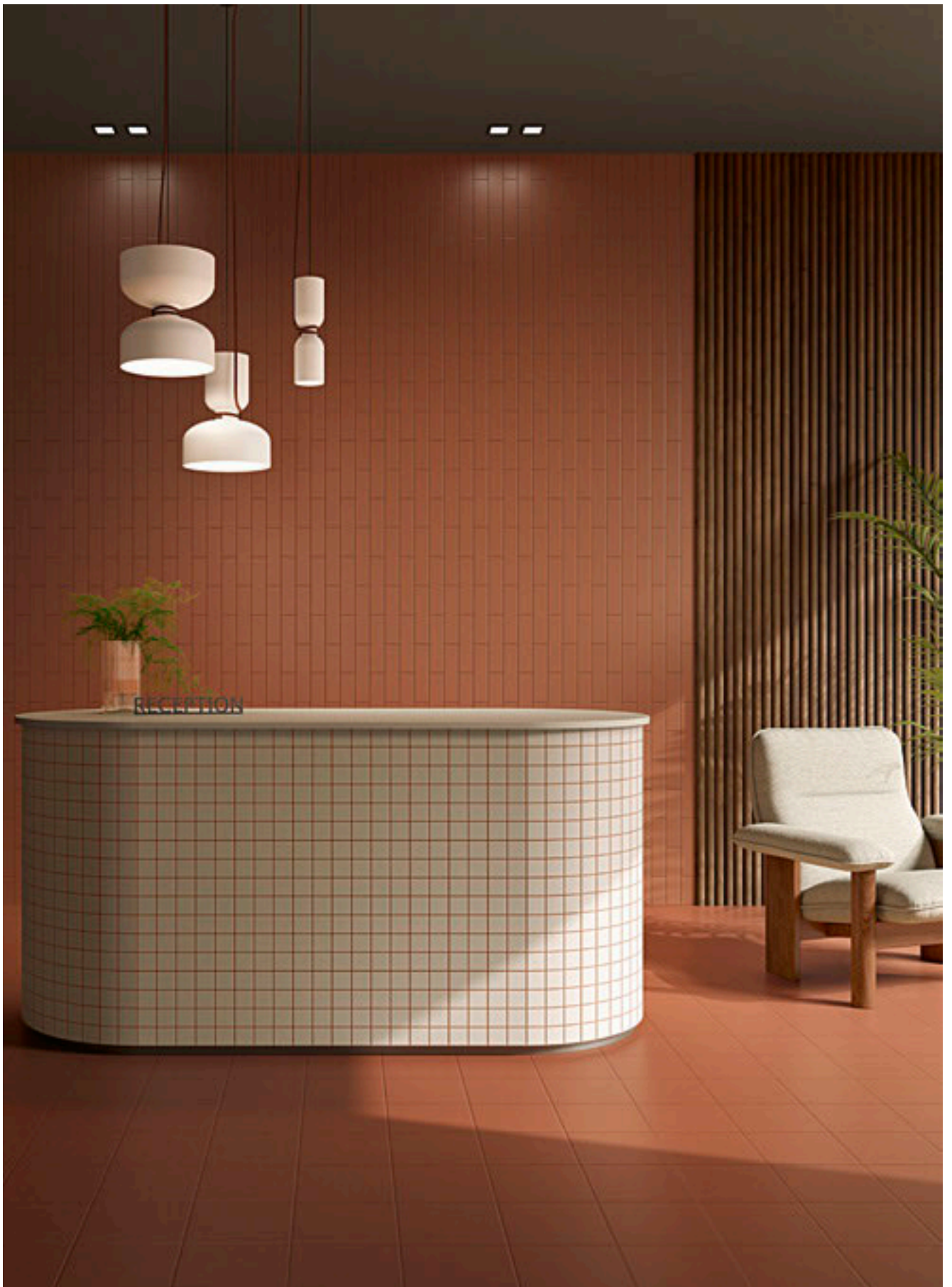


FLUORO



NICKEL

PROGETTO BY:  
Svenska Kakel  
Best Western Gran Hotel - Halmstad - Svezia



5x5 SU RETE 2"x2" ON MESH



SODIO

6x25 2,36"x9,84"



GRES

20x20 8"x8"



GRES





5x5 2"x2"



FLURO



NICKEL





6x25 2,36"x9,84"



SODIO



CARBONIO

PROGETTO BY:  
Studio Cavallo 21  
Arch. Mirco Cavallo





6x25 2,36"x9,84" - FULL BODY



NICKEL



XENO



SODIO





10x10 4"x4" - FULL BODY



NICKEL



OSSIDO



# Forme e design



10x10 4"x4" . MATT



FLUORO



ZAFFIRO





BUTTERFLY SU RETE 2"x2" ON MESH



ALLUMINIO



# Formati & Colori

SIZES AND COLOURS



\* VEDI AVVERTENZE PAG. 167

FORMATO	DIMENSIONI (mm)	SPESSORE (mm)	kg / mq	mq / box	pcs / box	box / pallet	mq / pallet
6x25	61x250	7	16	1,00	66	60	60
10x10	98,5x98,5	7	16	1,00	100	72	72
20x20	200x200	7	16	1,20	30	76	91,20
2,5x2,5 su rete	300x300 Foglio	4,5	11	1,00	11 fogli	40	40
5x5 su rete	300x300 Foglio	5,5	11	1,00	11 fogli	40	40

**FULL BODY**

**FLUORO**



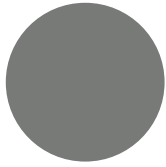
-
10x10
20x20
5x5
2,5x2,5
2,5x5 Butterfly
Ottagono

**ALLUMINIO**



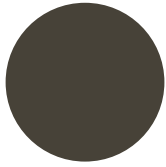
-
10x10
20x20
5x5
2,5x2,5
2,5x5 Butterfly
Ottagono

**NICKEL**



6x25
10x10
20x20
5x5
2,5x2,5
2,5x5 Butterfly
Ottagono

**CARBONIO**



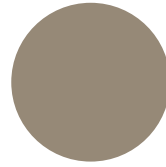
6x25
10x10
20x20
5x5
2,5x2,5
2,5x5 Butterfly
Ottagono

**SODIO**



6x25
10x10
20x20
5x5
2,5x2,5
2,5x5 Butterfly
Ottagono

**XENO**



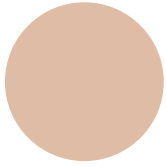
6x25
10x10
20x20
5x5
2,5x2,5
2,5x5 Butterfly
Ottagono

**SABBIA**



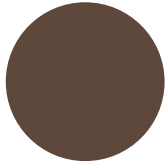
-
10x10
-
5x5
-
-
-
-

**AGATA**



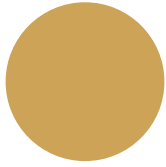
-
10x10
20x20
5x5
-
Ottagono

**TERRA**



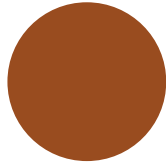
-
10x10
-
5x5
-
-
-
-

**OTTONE**



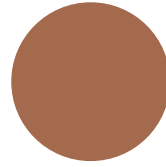
-
10x10
-
5x5
-
-
-
-

**GRES**



6x25
10x10
20x20
5x5
2,5x2,5
2,5x5 Butterfly
Ottagono

**RUGGINE**



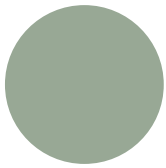
-
10x10
-
5x5
-
-
-
-

**GIADA**



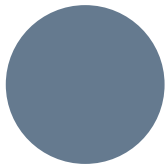
-
10x10
20x20
5x5
-
-
Ottagono

**OSSIDO**



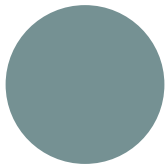
-
10x10
-
5x5
-
-
-

**ZAFFIRO**



-
10x10
20x20
5x5
-
-
Ottagono

**ACQUA**



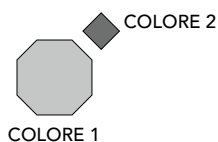
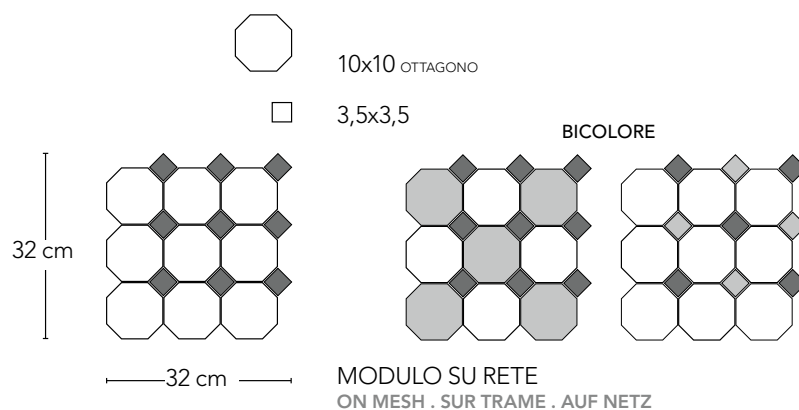
-
10x10
-
5x5
-
-
-



# 10x10 Ottagono

FULL BODY R10 A+B

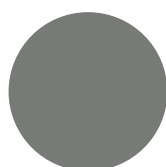
## FULL BODY COLLECTION



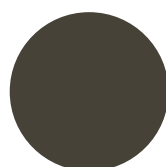
FLUORO



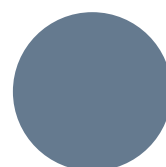
SODIO



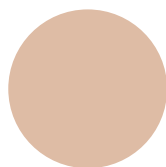
NICKEL



CARBONIO



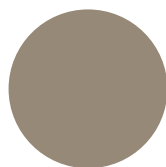
ZAFFIRO



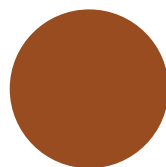
AGATA



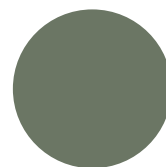
ALLUMINIO



XENO



GRES



GIADA





# Proposte cromatiche



10x10 4"x4" . OTTAGONO

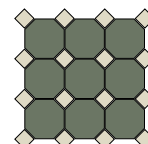
3,5x3,5 1 3/8"x1 3/8" SU RETE ON MESH



GIADA



SODIO



La serie abbina le caratteristiche tecniche del Full Body, gres porcellanato colorato in massa, alla particolarità delle forme geometriche dal sapore retrò.

Disponibile nella composizione su rete (ottagono 10x10 e tozzetto 3,5x3,5), viene proposto in 10 varianti monocolori coordinabili con le bordure e gli altri formati della linea Full Body. Ideale per la pavimentazione di ambienti sia pubblici sia privati combina alla resistenza del materiale una superficie antiscivolo R10 A+B.

Utilizza la nostra applicazione Full Body Art Déco per creare la tua composizione per la serie ottagonò.

([www.cesiceramica.it/progetta\\_online/art\\_deco](http://www.cesiceramica.it/progetta_online/art_deco))

This range combines Full Body technical features (unglazed porcelain R10 A+B) and geometrical shapes, giving a vintage zest to the final product.

It is available in 10x10 patterns on mesh (octogone and taco) in 10 plain colors which match with borders and other sizes of Full body range.

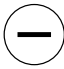


It is the ultimate product for both public and private flooring thanks to its antislip surface.

Use our Full Body Art Déco to create your own composition.



PROGETTO BY:  
Ristorante Lentini's - Milano

10x10 4"x4" . OTTAGONO    3,5x3,5 1 3/8"x1 3/8" SU RETE ON MESH

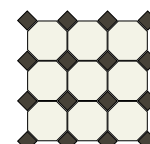
FLUORO                      CARBONIO

7,5x15 3"x6" . DIAMANTATO





TALCO                      LAVA







10x10 4"x4" . OTTAGONO

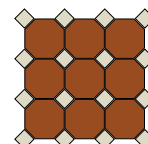
3,5x3,5 1 3/8"x1 3/8" SU RETE ON MESH



GRES



FLUORO







10x10 4"x4" . OTTAGONO BICOLORE



ALLUMINIO

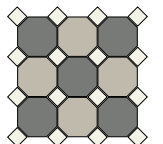


NICKEL

3,5x3,5 1 3/8"x1 3/8" SU RETE ON MESH



FLUORO







[www.cesiceramica.it](http://www.cesiceramica.it)



Via Don Minzoni, 19  
23844 Sirone (Lecco) - Italy  
Tel. +39 031 850058  
Fax Italia +39 031 852468  
[vendite@cesiceramica.it](mailto:vendite@cesiceramica.it)  
Fax Export +39 031 870107  
[sales@cesiceramica.it](mailto:sales@cesiceramica.it)