

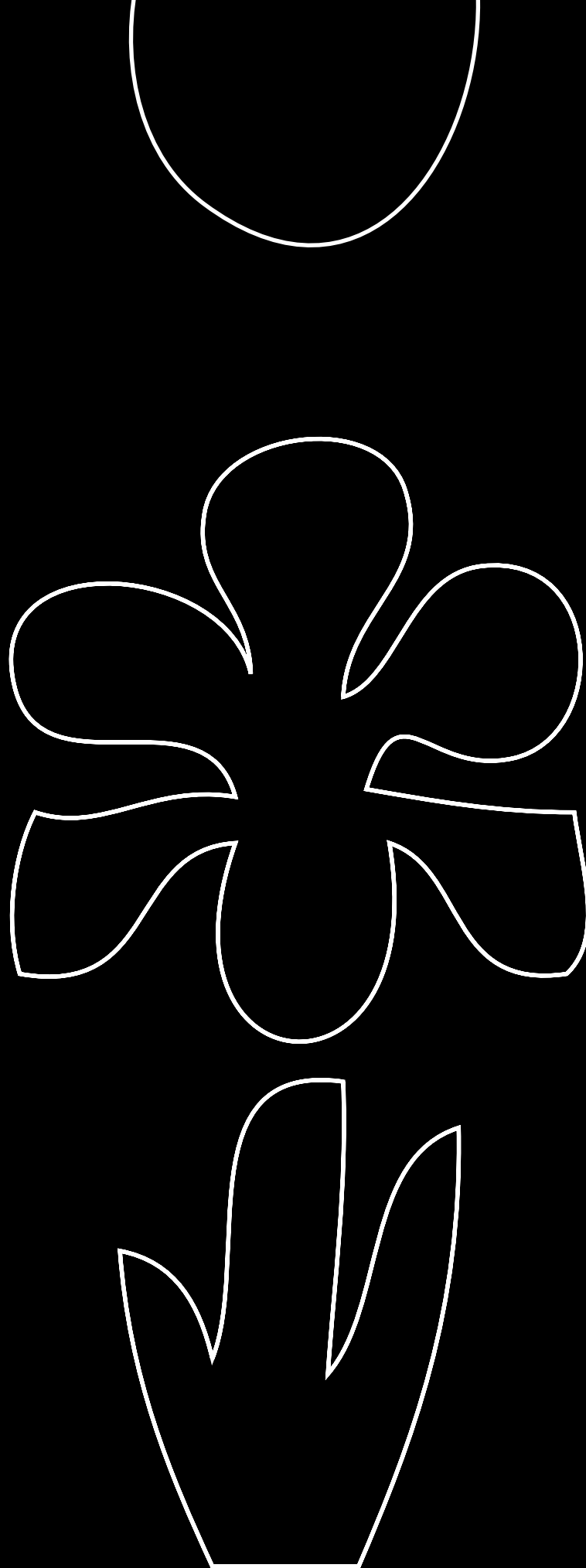
Iris U.S. Customer Service
800.323.9906
www.irisus.com



USIRISDX13

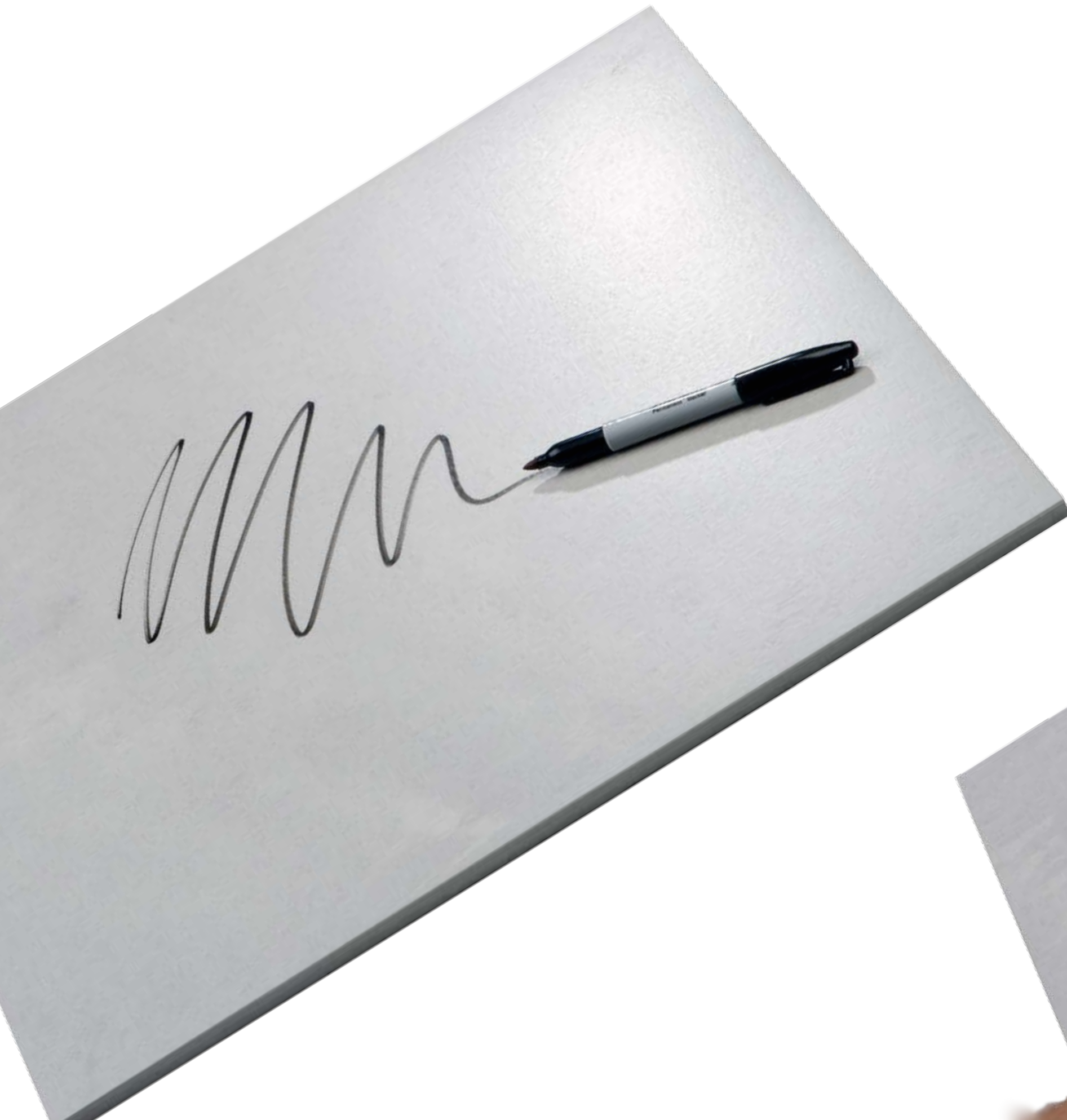


Made in the USA



Deluxe





Deluxe Collection

Introducing the New **Anti Graffiti** Luster Finish

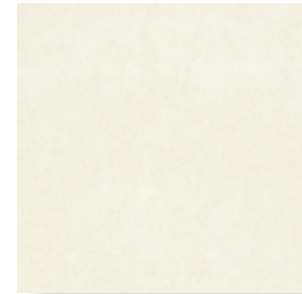


Deluxe Collection



Rectified

V2



Perla

24 x 24	12 x 24	12 x 12	6 x 24
IRH2424014 IRP2424014	IRH1224014 IRP1224014 IRL1224014 IRH1224014AC	IRH1212014 IRP1212014	IRH0624014 IRP0624014

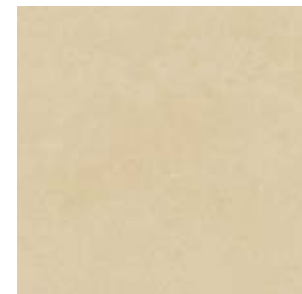
Honed
Polished
Luster
Active



Crema

24 x 24	12 x 24	12 x 12	6 x 24
IRH2424008 IRP2424008	IRH1224008 IRP1224008 IRL1224008 IRH1224008AC	IRH1212008 IRP1212008	IRH0624008 IRP0624008

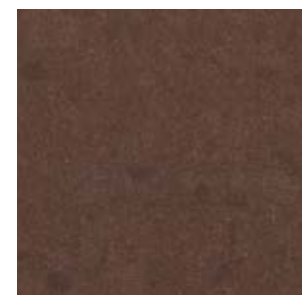
Honed
Polished
Luster
Active



Botticino

24 x 24	12 x 24	12 x 12	6 x 24
IRH2424007 IRP2424007	IRH1224007 IRP1224007	IRH1212007 IRP1212007	IRH0624007 IRP0624007

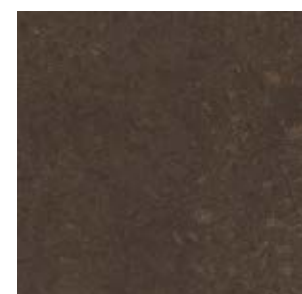
Honed
Polished



Sable

24 x 24	12 x 24	12 x 12	6 x 24
IRH2424016 N/A	IRH1224016 IRP1224016	IRH1212016 IRP1212016	IRH0624016 IRP0624016

Honed
Polished

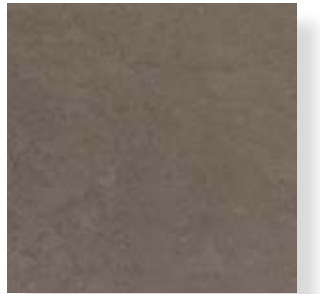


Chocolate

24 x 24	12 x 24	12 x 12	6 x 24
IRH2424017 IRP2424017	IRH1224017 IRP1224017	IRH1212017 IRP1212017	IRH0624017 IRP0624017

Honed
Polished

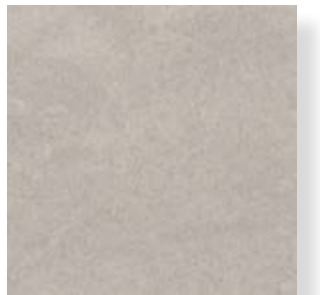
Deluxe Collection



Olive Brown

6 x 24	12 x 12	12 x 24	24 x 24
IRH0624015 IRP0624015	IRH1212015 IRP1212015	IRH1224015 IRP1224015	IRH2424015 IRP2424015

Honed
Polished



Delorian Grey

6 x 24	12 x 12	12 x 24	24 x 24
IRH0624011 IRP0624011	IRH1212011 IRP1212011	IRH1224011 IRP1224011 IRL1224011	IRH2424011 IRP2424011

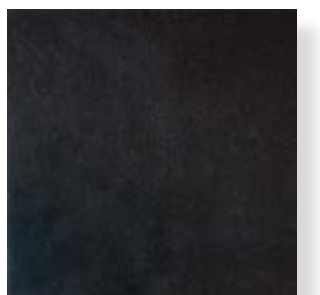
Honed
Polished
Luster



Ocean Storm

6 x 24	12 x 12	12 x 24	24 x 24
IRH0624018 IRP0624018	IRH1212018 IRP1212018	IRH1224018 IRP1224018 IRL1224018	IRH2424018 IRP2424018

Honed
Polished
Luster



Absolute Black

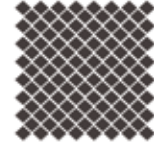
6 x 24	12 x 12	12 x 24	24 x 24
IRH0624012 IRP0624012	IRH1212012 IRP1212012	IRH1224012 IRP1224012	IRH2424012 IRP2424012

Honed
Polished



Crema 12" x 24" & 24" x 24" honed & polished
Botticino 12" x 12" polished

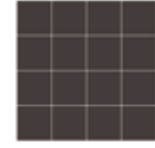
Deluxe Mosaics



Diamond Mosaic

1 x 1 mesh mounted on 12 x 12 sheet

	Honed	Polished
Perla	IRH12MD114	IRP12MD114
Crema	IRH12MD108	IRP12MD108
Botticino	IRH12MD107	IRP12MD107
Sable	IRH12MD116	IRP12MD116
Chocolate	IRH12MD117	IRP12MD117
Olive Brown	IRH12MD115	IRP12MD115
Delorian Grey	IRH12MD111	IRP12MD111
Ocean Storm	IRH12MD118	IRP12MD118
Absolute Black	IRH12MD112	IRP12MD112



Classic 01 Mosaic

3 x 3 mesh mounted on 12 x 12 sheet

	Honed	Polished
Perla	IRH12MC114	IRP12MC114
Crema	IRH12MC108	IRP12MC108
Botticino	IRH12MC107	IRP12MC107
Sable	IRH12MC116	IRP12MC116
Chocolate	IRH12MC117	IRP12MC117
Olive Brown	IRH12MC115	IRP12MC115
Delorian Grey	IRH12MC111	IRP12MC111
Ocean Storm	IRH12MC118	IRP12MC118
Absolute Black	IRH12MC112	IRP12MC112



Herringbone 01 Mosaic

1 x 2 mesh mounted on 12 x 12 sheet

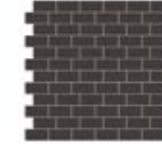
	Honed	Polished
Perla	IRH12MH114	IRP12MH114
Crema	IRH12MH108	IRP12MH108
Botticino	IRH12MH107	IRP12MH107
Sable	IRH12MH116	IRP12MH116
Chocolate	IRH12MH117	IRP12MH117
Olive Brown	IRH12MH115	IRP12MH115
Delorian Grey	IRH12MH111	IRP12MH111
Ocean Storm	N/A	N/A
Absolute Black	IRH12MH112	IRP12MH112



Lines 01 Mosaic

1 x 12 mesh mounted on 12 x 12 sheet

	Honed	Polished
Perla	IRH12ML114	IRP12ML114
Crema	IRH12ML108	IRP12ML108
Botticino	IRH12ML107	IRP12ML107
Sable	IRH12ML116	IRP12ML116
Chocolate	IRH12ML117	IRP12ML117
Olive Brown	IRH12ML115	IRP12ML115
Delorian Grey	IRH12ML111	IRP12ML111
Ocean Storm	IRH12ML118	IRP12ML118
Absolute Black	IRH12ML112	IRP12ML112



Brick 01 Mosaic

1 x 2 mesh mounted on 12 x 12 sheet

	Honed	Polished
Perla	IRH12MB114	IRP12MB114
Crema	IRH12MB108	IRP12MB108
Botticino	IRH12MB107	IRP12MB107
Sable	IRH12MB116	IRP12MB116
Chocolate	IRH12MB117	IRP12MB117
Olive Brown	IRH12MB115	IRP12MB115
Delorian Grey	IRH12MB111	IRP12MB111
Ocean Storm	IRH12MB118	IRP12MB118
Absolute Black	IRH12MB112	IRP12MB112



Brick 02 Mosaic

3 x 6 mesh mounted on 12 x 12 sheet

	Honed	Polished
Perla	IRH12MB214	IRP12MB214
Crema	IRH12MB208	IRP12MB208
Botticino	IRH12MB207	IRP12MB207
Sable	IRH12MB216	IRP12MB216
Chocolate	IRH12MB217	IRP12MB217
Olive Brown	IRH12MB215	IRP12MB215
Delorian Grey	IRH12MB211	IRP12MB211
Ocean Storm	IRH12MB218	IRP12MB218
Absolute Black	IRH12MB212	IRP12MB212



Crema, Perla, Chocolate honed & Botticino polished, mixed sizes



Crema 24"x 24" honed

Crema, Perla, & Botticino 18" x 18", Botticino & Chocolate 6" x 24



Deluxe Trim

Deluxe Trim



Bullnose

3 x 12



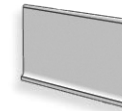
Double Bullnose Right

3 x 12



Double Bullnose Left

3 x 12



Cove Base

6 x 12



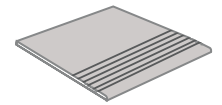
In Corner

1 x 6



Out Corner

1 x 6



Stair Tread

12 x 12

	Honed		Polished		Honed		Polished		Honed		Polished		Honed		Polished	
Perla	IRH312B014	IRP312B014	IRH312B314	IRP312B314	IRH312B614	IRP312B614	IRH612C014	IRH16IC014	IRH16OC014	IRH12ST014	IRH12ST014	IRH12ST014	IRH12ST014	IRH12ST014	IRH12ST014	IRH12ST014
Crema	IRH312B008	IRP312B008	IRH312B308	IRP312B308	IRH312B608	IRP312B608	IRH612C008	IRH16IC008	IRH16OC008	IRH12ST008	IRH12ST008	IRH12ST008	IRH12ST008	IRH12ST008	IRH12ST008	IRH12ST008
Botticino	IRH312B007	IRP312B007	IRH312B307	IRP312B307	IRH312B607	IRP312B607	IRH612C007	IRH16IC007	IRH16OC007	IRH12ST007	IRH12ST007	IRH12ST007	IRH12ST007	IRH12ST007	IRH12ST007	IRH12ST007
Sable	IRH312B016	IRP312B016	IRH312B316	IRP312B316	IRH312B616	IRP312B616	IRH612C016	IRH16IC016	IRH16OC016	IRH12ST016	IRH12ST016	IRH12ST016	IRH12ST016	IRH12ST016	IRH12ST016	IRH12ST016
Chocolate	IRH312B017	IRP312B017	IRH312B317	IRP312B317	IRH312B617	IRP312B617	IRH612C017	IRH16IC017	IRH16OC017	IRH12ST017	IRH12ST017	IRH12ST017	IRH12ST017	IRH12ST017	IRH12ST017	IRH12ST017
Olive Brown	IRH312B015	IRP312B015	IRH312B315	IRP312B315	IRH312B615	IRP312B615	IRH612C015	IRH16IC015	IRH16OC015	IRH12ST015	IRH12ST015	IRH12ST015	IRH12ST015	IRH12ST015	IRH12ST015	IRH12ST015
Delorian Grey	IRH312B011	IRP312B011	IRH312B311	IRP312B311	IRH312B611	IRP312B611	IRH612C011	IRH16IC011	IRH16OC011	IRH12ST011	IRH12ST011	IRH12ST011	IRH12ST011	IRH12ST011	IRH12ST011	IRH12ST011
Ocean Storm	IRH312B018	IRP312B018	IRH312B318	IRP312B318	IRH312B618	IRP312B618	IRH612C018	IRH16IC018	IRH16OC018	IRH12ST018	IRH12ST018	IRH12ST018	IRH12ST018	IRH12ST018	IRH12ST018	IRH12ST018
Absolute Black	IRH312B012	IRP312B012	IRH312B312	IRP312B312	IRH312B612	IRP312B612	IRH612C012	IRH16IC012	IRH16OC012	IRH12ST012	IRH12ST012	IRH12ST012	IRH12ST012	IRH12ST012	IRH12ST012	IRH12ST012



Absolute Black 12" x 24" honed



HONDA
PRESIDENT'S
ZIMBRICK
2002

HONDA
PRESIDENT'S
ZIMBRICK
2005

HONDA
PRESIDENT'S
ZIMBRICK
2004

HONDA
PRESIDENT'S
ZIMBRICK
2007

HONDA
PRESIDENT'S
ZIMBRICK
2007

HONDA
PRESIDENT'S
ZIMBRICK
2006

HONDA
PRESIDENT'S
ZIMBRICK
2006

HONDA
PRESIDENT'S
ZIMBRICK
2006

EXIT



Olive Brown 24" x 24" honed



Olive Brown & Botticcino 12" x 24" honed & polished





Perla 12" x 24" polished

ACTIVE[™] PHOTOCATALYTIC CERAMIC Collection

Active[™] Photocatalytic Ceramic is a new finish obtained through a production methodology based on an innovative micrometric titanium dioxide process, which acts as a photocatalyst, carried on engineered surfaces at high temperature.



On the reduction of nitrogen oxides (NO_x), it is estimated that 1.000 square meters of surface area of Extra White Active[™] Photocatalytic Ceramic, radiated by sunlight for 2,455 hours per year, has an effect equal to that of 20 mature trees.

Positive Capabilities:

Just as plants can absorb and remove NO_x air pollutants, which cause acid rain and ozone, the photocatalytic properties of Active[™] Photocatalytic Ceramic reduce NO_x concentrations in the air.

Benefiting the Environment in Homes & Businesses:

Active[™] Photocatalytic Ceramic is an environmental technology utilizing photocatalysts that interact with light and humidity. It can be used effectively in various applications, including walls and floors.

How Active[™] Photocatalytic Ceramic Works

When titanium dioxide (TiO₂) is hit by sunlight, particularly by its UV component, the electrons in the external orbit of the molecule are released and activated. Their presence allows oxygen to react with organic substances of all kinds, oxidizing them into two harmless components. The TiO₂ acts as a catalyst. It permits the reaction but is not consumed and is ready for further oxidation.

Advantages

In the presence of light and humidity, a strong oxidation reaction is activated by Active[™] Photocatalytic Ceramic, that leads to the decomposition of particular nitrogen oxides (NO_x) in the air, when they come in contact with the Active[™] Photocatalytic Ceramic surface.

Use

The excellent physical - chemical characteristics of Active[™] Photocatalytic Ceramic make it ideal for the following applications:

- Exterior cladding of buildings
- Interior
- Wall
- Floor

Benefits

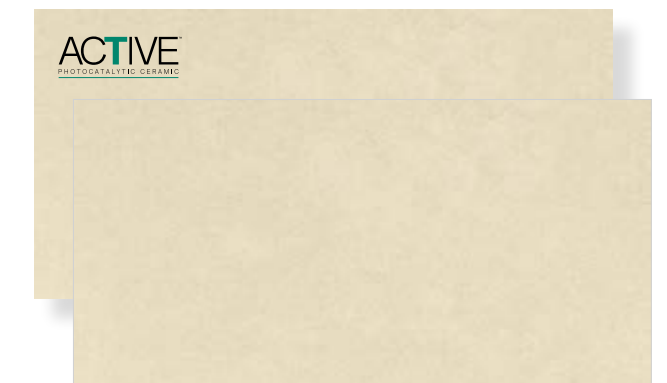
- Preservation of aesthetic characteristics by exploiting the capability to repel dirt and other contaminants every time that it rains.
- Abatement of nitrogen oxides pollutants (NO_x)
- Observance of deodorizing effect



Perla 12 x 24

ACTIVE Finish
IRH1224014AC

ACTIVE Finish with engraved logo
IRH1224014LG



Crema 12 x 24

ACTIVE Finish
IRH1224008AC

ACTIVE Finish with engraved logo
IRH1224008LG



Olive Brown 24" x 24" honed

C1028
COF
 Dry ≥ 0.80
 Wet ≥ 0.70

Acutest
DCOF
 Wet ≥ 0.42

Deluxe Tech Specs

PHYSICAL PROPERTIES	TEST	INDUSTRY STANDARDS	IRIS US RESULTS THROUGH BODY
Water Absorption	ASTM C373	0.5% Maximum	≤ 0.1%
Size			
Calibrated (non rectified)	ASTM C499	• Range of Thickness (inch) 0.040	≤ 0.040
	ASTM C499	• Average Facial Dimension ± 0.50%	≤ ± 0.50%
	ASTM C485	• Warpage ± 75% on any edge	≤ ± 0.75%
	ASTM C485	• Warpage ± 50% on diagonal	≤ ± 0.50%
	ASTM C502	• Wedging ± 0.50%	≤ ± 0.50%
Rectified	ASTM C499	• Range of Thickness (inch) 0.040	≤ 0.040
	ASTM C499	• Average Facial Dimension ± 0.25%	≤ 0.25%
	ASTM C485	• Warpage ± 0.40% on any edge	≤ 0.40%
	ASTM C485	• Warpage ± 0.40% on diagonal	≤ 0.40%
	ASTM C502	• Wedging ± 0.25%	≤ 0.25%
Bond Strength	ASTM C482	50 psi or greater	> 200 psi
Deep Abrasion	ASTM C1243	< 175 mm ³	< 150 mm ³
Hardness (Mohs scale)		No requirement	≥ 7
Frost Resistance (Freeze/Thaw)	ASTM C1026	No sample must show alterations to surface	No cracking or spalling occurred
Chemical Resistance	ASTM C650	No requirement	Class A
Breaking Strength	ASTM C648	250 lbf or greater	≥ 500 lbf
Coefficient of Friction (static)	ASTM C1028	No requirement	Per collection

Data taken from a representative through body collection. Individual product testing can be conducted by request.

Coefficient of Friction: All values given are for matte or honed material. No values are given for polished material. Iris U.S. does not recommend polished surfaces in areas subject to exposure from grease, oil or water. (All values are based on ASTM C1028 and Acutest DCOF.)

Deluxe Packaging

PRODUCT	FINISH	SIZE	BOX PIECES	BOX SF	PALLET BOXES	PALLET SF	THICKNESS	WEIGHT LB/SF
Floor & Wall Tile	Honed & Polished	24 x 24	4	15.834	30	475.02	9	4.55
Luster not available in all colors/sizes	Honed / Polished / Luster	12 x 24	8	15.751	32	504.032	9	4.55
	Honed / Polished / Luster*	12 x 12	10	9.793	60	587.58	9	4.55
	Honed & Polished	6 x 24	16	15.585	40	623.4	9	4.55

Mosaics 12 x 12 Sheet	Finish	SIZE	BOX PIECES	BOX SF	LB PER PIECE	Trim	Finish	SIZE	BOX PIECES	BOX SF	LB PER PIECE
Brick 01	Honed & Polished	1 x 2	5	4.896	4.55	Bullnose	Honed & Polished	3 x 12	33	7.994	0.95
Brick 02	Honed & Polished	3 x 6	5	4.896	4.55	Cove Base	Honed	6 x 12	8	3.88	1.70
Classic 01	Honed & Polished	3 x 3	5	4.896	4.55	In Corner	Honed	1 x 6	4	0.16	0.15
Diamond 01	Honed & Polished	1 x 1	5	4.896	4.55	Out Corner	Honed	1 x 6	4	0.16	0.15
Herringbone 01	Honed & Polished	1 x 2	5	4.896	4.55	Stair Tread	Honed	12 x 12	10	9.793	4.55
Lines 01	Honed & Polished	1 x 12	5	4.896	4.55						