

DOTS COLLECTION

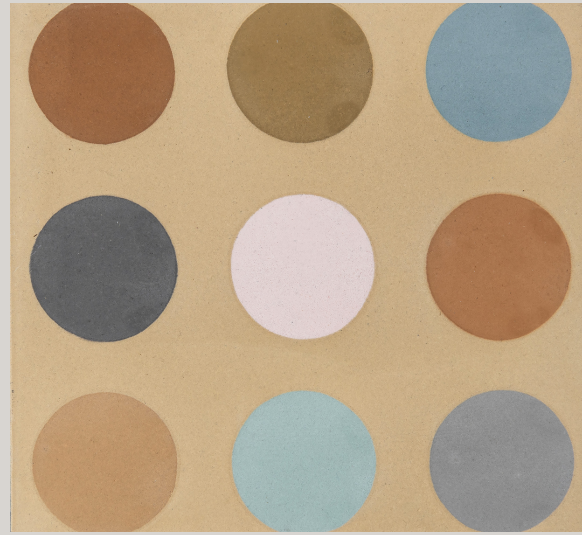
Design by Mats Theselius

Mats Theselius' new collection Dots is mostly about colour and a less about the pattern effect. Its the colours who does most of the work in this design. The collection consists of six different tiles, four of which are called "Dots: Make-up palette". In these four tiles the base color is different but the color of the Dots is recurring.





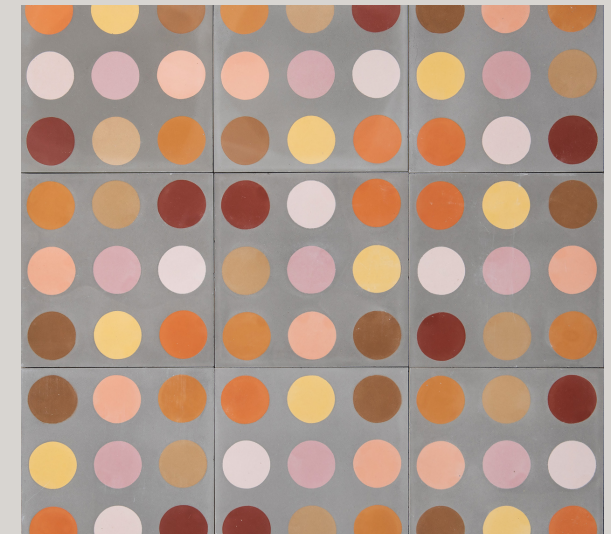
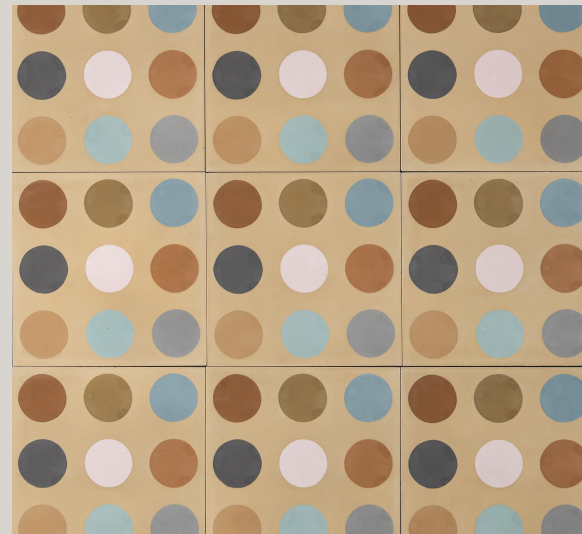
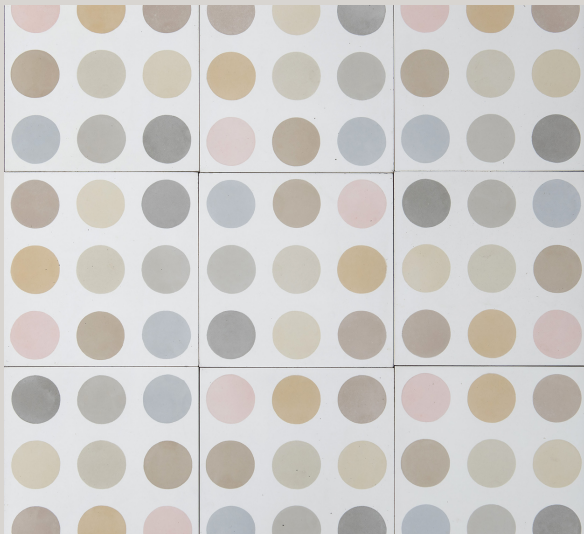
Dots - pure white/vanilla



Dots - sand/pale pink



Dots: Make-up palette
salmiak





Dots: Make-up palette
sand



Dots: Make-up palette
charcoal



Dots: Make-up palette
pure white

