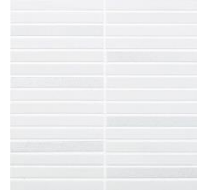


LUNGO for Bathroom / Kitchen

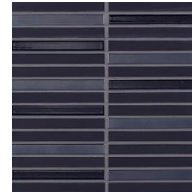
INAX



Color



IM-1520P1/LUG-1
White Mix



IM-1520P1/LUG-2
Black Mix



Instagram
[@inaxjtw_official](https://www.instagram.com/inaxjtw_official)



Website
[inaxtile.com](https://www.inaxtile.com)

LUNGO for Bathroom / Kitchen



Spec

Porcelain / Glazed

Field Tile

IM-1520P1/LUG-1~LUG-2

Size/pc	145×16mm (5.71x.63in)
Size/sht (Actual)	295×296mm (11.61x11.65in)
Size/sht (Nominal)	300×300mm (11.81x11.81in)
Thickness	8mm
Joint	Horizontal 4mm Vertical 5mm
Quantity/sqm	11.5 sheets
Quantity/sqf	11.19
Quantity/ctn	12 sheets
Weight/ctn	15.6kg (34.2lb)
HS code (2017)	6907.22-100

Note:

Has size variation.

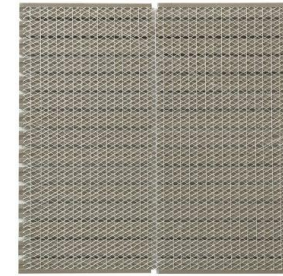
Mixed products with matt, glossy and metallic glaze.

Handle metallic tile carefully as it is easy to get scratches and stains may be remarkable.

INAXMarketing_Americas@LIXIL.com



Dimension of sheet
(Bright, Matte, Luster mix)



Mounting : Back net

Installation Material

Adhesive ✓

Mortar ✗

Grouting ✓



Instagram
@inaxjtw_official



Website
inaxtile.com